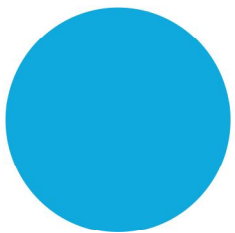
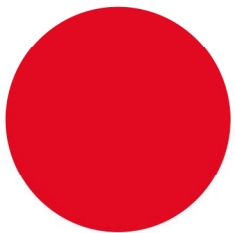


trident



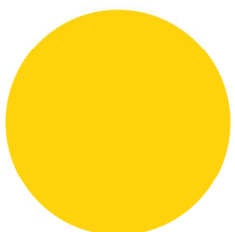
**Accept the challenge  
Change your view of the world**

---



**X-VIEW 3D**

cone beam

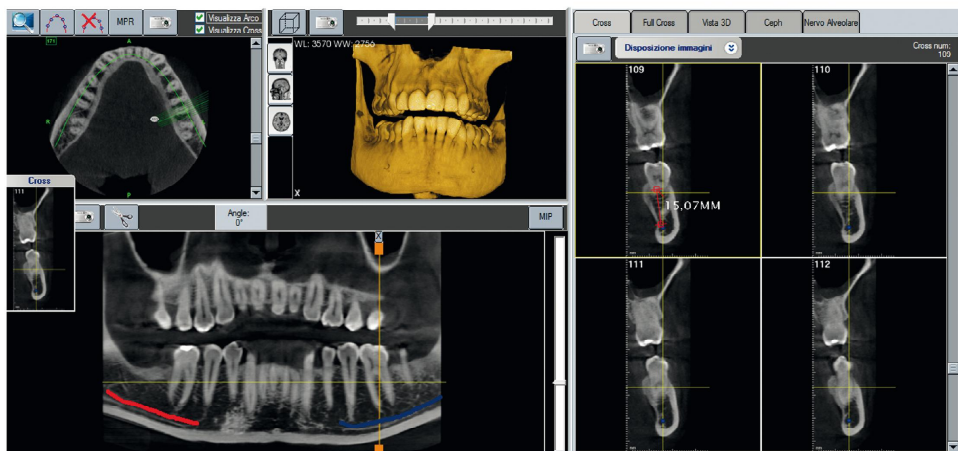


# X-VIEW evolves and develops in response to your needs

Discover the integrated and evolutionary three-in-one system for the acquisition and management of 3D/2D/CEPH digital images, designed and produced in Italy by Trident. Four different options allow you gradually access to the most advanced technology available on the market.

The X-View configurations can be upgraded to meet your needs

- PANORAMIC 2D
- PANORAMIC 2D-CEPH Single Shot
- 3D-PAN multilayer
- 3D-PAN multilayer ceph single shot



X-VIEW offers Cone Beam 3D Multilayer 2D Panoramic 24 x 30 Single shot CEPH

# Together into the third dimension.

Obtain unique images for accurate diagnoses and perfect treatments, with all the advantages offered by X-VIEW:

## Deep View ® software

The characteristics of the exclusive software designed by Trident, for the X-VIEW family, allow you to develop **high-definition images** in less time. The quality of the images helps you to quickly identify diseases and changes anywhere in the oral cavity anatomy.

**Deep View ®** software is intuitive, explaining and guiding the user through the various operations. The software make it possible to carry out any type of measurement and cut (section) of the teeth, even in cases where the morphology of the dental arch is particularly complicated.

**Deep View ®** can easily be connects to other systems already in place in the dental clinic (open software). Main characteristics: **TWAIN** interface, **DICOM 3**.



*Speed is the form of ecstasy  
the technical revolution  
has bestowed on man  
(Milan Kundera)*

### 7-inch colour touchscreen

- Great accessibility  
The ideal size of the display allows users to easily read the anatomic icons that guide them rapidly and intuitively through the menu.

### DC Generator

- X-VIEW avoids the emission of unnecessary radiation by using a high frequency "pulse mode" generator that guarantees a perfect balance between the image quality required and the amount of radiation emitted.

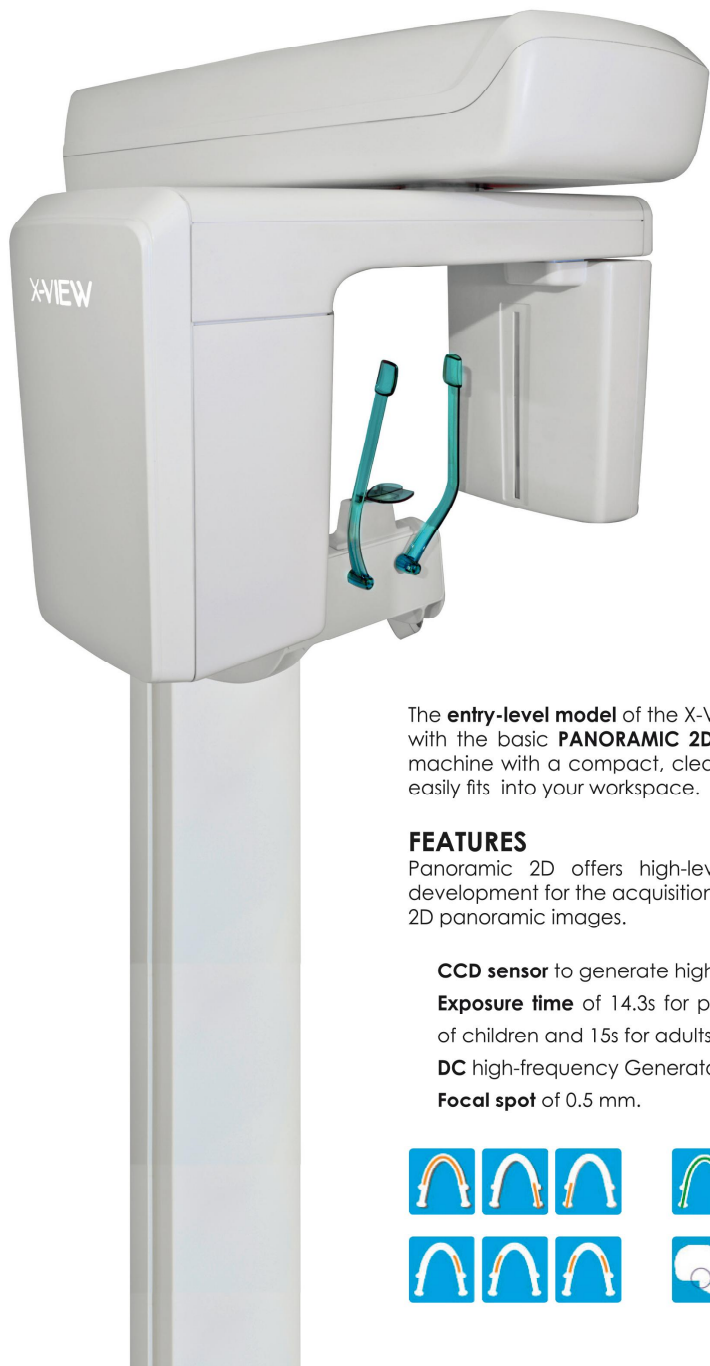


### Patient positioning

- Laser lights to keep the patient in appropriate position
- Biting block (for panoramic X-rays) or chin rest (for 3D X-rays) to keep the patient's head stable



# X-VIEW 2D PAN



## 2D PROGRAMS

- Adult panoramic
- Child panoramic
- Bitewing
- Sectoral panoramic
- Paranasal sinuses
- TMJ
- Orthopantomax
- Reduced radiation panoramic

The **entry-level model** of the X-VIEW family begins with the basic **PANORAMIC 2D**, an evolutionary machine with a compact, clean-cut design that easily fits into your workspace.

## FEATURES

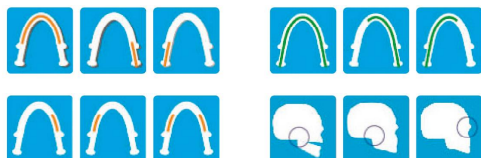
Panoramic 2D offers high-level technological development for the acquisition of **15 x 30 cm** 2D panoramic images.

**CCD sensor** to generate high-quality images.

**Exposure time** of 14.3s for panoramic images of children and 15s for adults.

**DC high-frequency Generator.**

**Focal spot** of 0.5 mm.



# X-VIEW 2D PAN CEPH



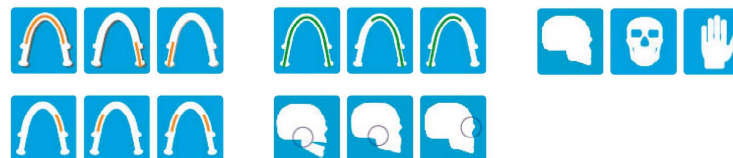
In addition to the features of the basic entry-level X-VIEW, this model is equipped with an arm for cephalometry and the exclusive flat panel phosphor plate CR 2430 sensor with **incorporated image reader** that make it possible to obtain 24 x 30 cm high-definition cephalometric images in less than 2 seconds, using the innovative **single-shot** technology.



Sensor exclusively  
for  
cephalometry

## Reduction of exposure time

While other machines use a scanning system with an exposure time of 15 seconds, **XView PANORAMIC 2D-CEPH**, thanks to the exclusive **Single Shot** system, is able to significantly reduce exposure time without negatively affecting the quality of the image (taking a single shot in less than 2s). The single shot system prevents the complications deriving from movement for obtaining images by scanning.



# X-VIEW 3D-PAN



The **CBCT system** opens the door to a wider range of professional options, offering support for carrying out operations in the fields of Implantology, General and Maxillofacial Surgery, Periodontology, TMJ and Endodontics.

## An efficient two-in-one solution

To obtain 13 x 30 cm 2D panoramic images, X-VIEW 3D-PANORAMICO uses the same sensor used to obtain 3D images.

## Multi-layer images

The high acquisition speed of this sensor makes it possible **to create an image bank** from which the software selects the sharpest shots and uses them to build up **three panoramic images**, with an interval of two millimetres in focus between them. This allows the user to obtain images in order to boost the accuracy of the diagnosis, thus avoiding further examinations in the event of problems with positioning the patient.



# X-VIEW 3D PAN CEPH



## Discover X-VIEW 3D-PANORAMIC-CEPH for obtaining panoramic, cephalometric and 3D images all in one and turn around your view of the world

In addition to the features of the basic entry-level X-VIEW, this model is equipped with an arm for cephalometry and the exclusive flat panel phosphor plate CR 2430 sensor with **incorporated image reader** that make it possible to obtain 24 x 30 cm high-definition cephalometric images in less than 2 seconds, using the innovative **single-shot** technology.

- FLAT PANEL with CMOS technology 13cm x 13cm
- Field of View 8.5cm x 8.5cm
- Panoramic 2D Multilayer
- 3D reconstruction time < 10 sec.
- Ceph sensor, Single shot (24cm x 30cm)

## The real 3 in 1

- **DC Generator**  
A high-frequency (discontinuous) pulse generator that allows images to be acquired by rotating 230 degrees in just 15 seconds. This generator produces 20 emissions per second.
- **8.5 x 8.5 volume images in just 10 seconds**
- A flat-panel CMOS sensor with an **active area of 13 x 13 cm**, resolution of 100 micron and the ability to capture **300 images/second**, guaranteeing the acquisition of an image bank that can be used for the volumetric construction of an image with a FOV with a diameter of 8.5 cm x a height of 8.5 cm.



# X-VIEW

cone beam

TECHNICAL  
INFORMATION

## GENERAL TECHNICAL INFORMATION

X-RAY GENERATOR	
Generator type	High frequency DC
Focal spot	0,5 mm
Total filtration	> 2,5 mm Aleq @ 70 kV
Leakage radiation	According to IEC 60601-2-63: <0,5 mGy/h @85 kV 10 mA 15s. duty cycle 1/8
Anodic voltage	61 ÷ 85 kV, step 3 kV
Anodic current	4 ÷ 10mA 9 steps
Power requirement	230V, 10A, monofase, (50/60Hz)
GENERALE	
Peso	95 Kg /135 Kg
Dimensioni	2290mm x 910mm x1070mm
Dimensioni con Ceph	2290mm x 1750mm x 1070mm

## X-VIEW 3D PAN

PANORAMIC MODE	
Sensor type	FLAT PANEL with CMOS technology
Sensor Area	13 x 13 cm
Exposure time	14,3 / 15,0 sec
3D MODE	
Sensor type	FLAT PANEL with CMOS technology
Field of view	8,5cm x 8,5cm (height x diameter)
Detector pixel size	100µm ( 200µm in binning 2x2)
Voxel size	160 µm
Tube head rotation	230°
Dynamic range	14 bit gray level (max 16.384)
Scan tim	15sec
3D reconstruction time	<10sec

## X-VIEW 2D PAN

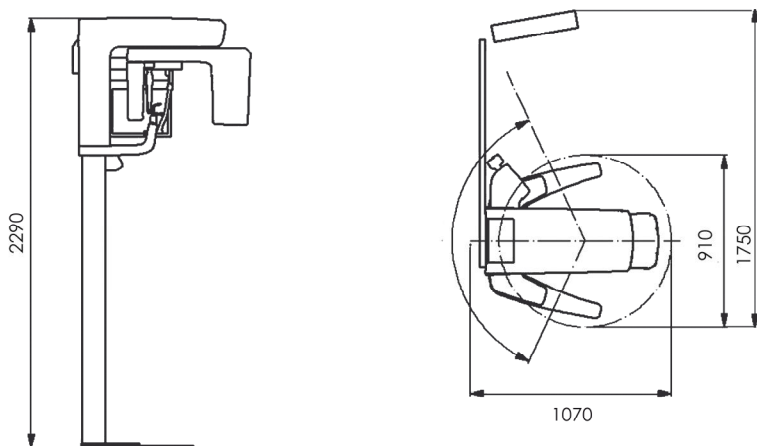
SENSOR 2D PANORAMIC	
Sensor Type PAN	CCD, with TDI functionality
Height	15 cm
Image format	15 cm x 30 cm
Exposure time	14,3/15,0 sec (Child/Adult, Standard PAN)
Dynamic range	14 Bit

## X-VIEW 3D PAN CEPH

CEPHALOMETRIC IMAGING	
Sensor Type	FLAT PANEL phosphor plate with direct on- board image acquisition and transmission (no need to remove the phosphor plate)
Image Format	24cm x 30cm maximum
Exposure type	Single shot
Acquisition time	2 sec
Acquisition time	2 mAs - 30 mAs (0,2 - 3 s)

## X-VIEW 2D PAN CEPH

CEPHALOMETRIC IMAGING	
Sensor Type	FLAT PANEL phosphor plate with direct on- board image acquisition and transmission (no need to remove the phosphor plate)
Image Format	24cm x 30cm maximum
Exposure type	Single shot
Acquisition time	2 sec
Acquisition time	2 mAs - 30 mAs (0,2 - 3 s)



trident

ITALY | Assago (MI) | info@trident-dental.com | www.trident-dental.com